

**New Mexico Environment Department
Air Quality Bureau
Smoke Management Guide**



Use this guide to determine whether your burn can be done under Open Burning or Smoke Management, and for Smoke Management burns, which level of smoke management you need to use. Consider the following statements:

Open Burning or Smoke Management?

I plan to burn no more than 10 acres (or 1,000 cubic feet if piled) of vegetative material in a day.

If this is true, you may be able to burn under the Open Burning requirements. See the open burning checklist ("Checklist and Guide for Open Burning of Vegetative Material").

OR

I plan to burn more than 10 acres (or 1,000 cubic feet if piled) of vegetative material in a day.

Continue using this guide to determine which level of smoke management you need to follow.

Which Level of Smoke Management?

The amount of vegetative material I plan to burn each day is less than the amounts in the table below, or I know by using the emission factors from the Smoke Management Program Guidance Document Appendix J that my burn will emit less than one ton of PM-10 per day.

This is an SMP I burn. See the SMP I burn requirements factsheet.

OR

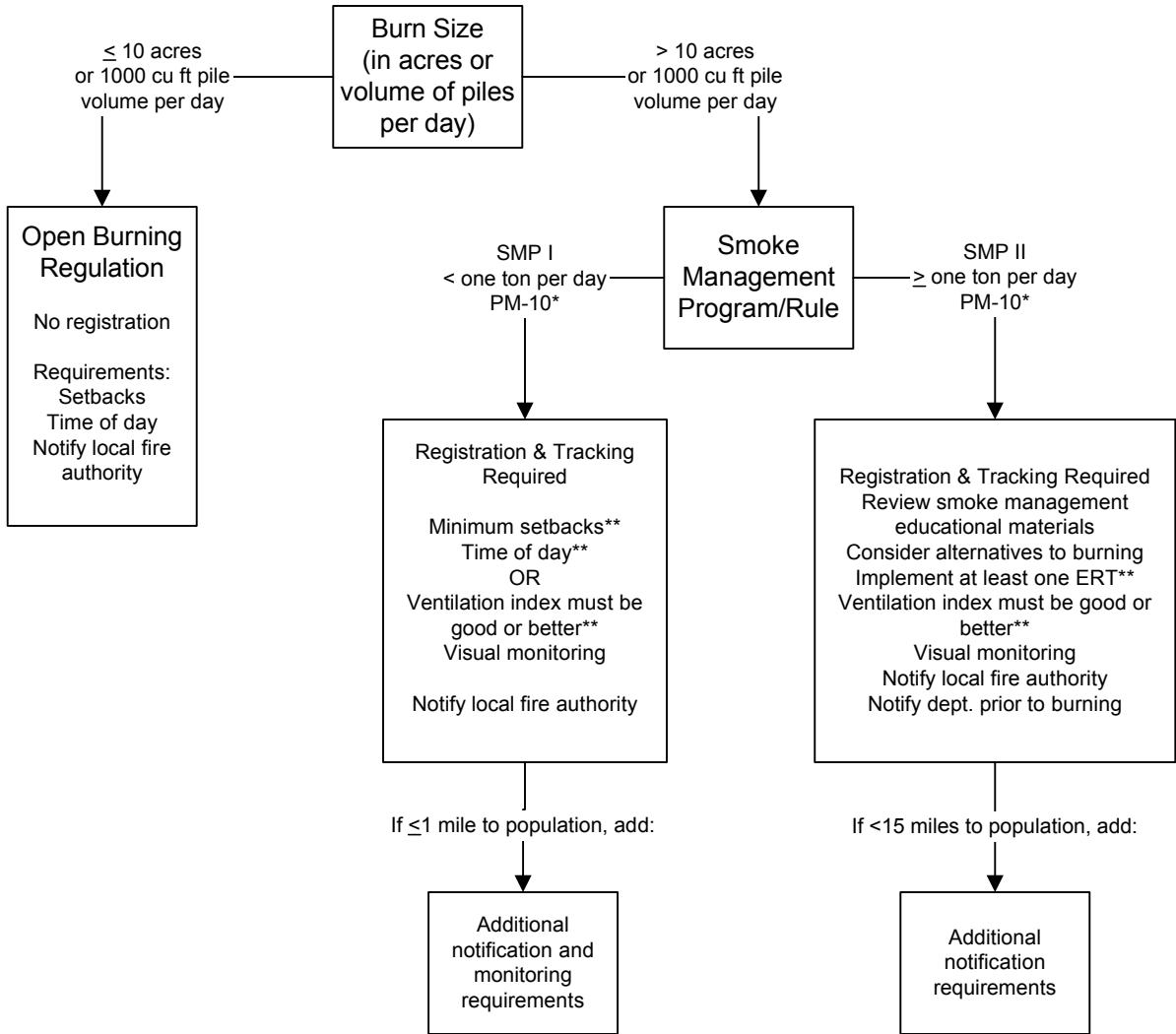
The amount of vegetative material I plan to burn each day is more than or equal to the amounts in the table below, or I know by using the emission factors from the Smoke Management Program Guidance Document Appendix J that my burn will emit at least one ton or more of PM-10 per day.

This is an SMP II burn. See the SMP II burn requirements factsheet.

NM SMP Acreage/Emissions Conversion Table		
Vegetation Type	Acreage or Pile Volume to Produce One Ton of PM₁₀	
Field Crops	65	Acres
Shrub land	34	Acres
Forest	23	Acres
Grass	100	Acres
Piled material	5000	Cubic feet

New Mexico Environment Department Air Quality Bureau

Open Burning/Smoke Management Requirements Matrix



*One ton of PM10 is equivalent to the emissions produced from burning a pile volume of 5000 cubic feet.

**A waiver may be obtained from the department for these requirements.

ERT = Emission Reduction Technique



New Mexico Environment Department
Air Quality Bureau
SMP I Requirements Factsheet

- Fill out the SMP I registration form for crops or for grasslands/shrubs/forests depending on the type of vegetation you are planning to burn. Submit the form to the Air Quality Bureau's Santa Fe office by 10:00 a.m. one business day prior to the day you plan to start the burn project. You can submit the form on-line at <http://smoke.state.nm.us>, fax the form to (505) 476-4375, e-mail the form to nmenv.smoke@state.nm.us, or mail the form to the Air Quality Bureau at 1301 Siler Rd., Bldg. B, Santa Fe, NM 87507. You can call the Air Quality Bureau with any questions regarding the smoke management program at 1-800-224-7009 and ask for the Smoke Management line.
- Although it is not required, think about alternative ways of disposing of the vegetative material other than burning. For example, grass clippings can be composted. Some communities have chipping facilities available for woody vegetative material. Another option would be to take the material to a solid waste transfer station or landfill. Other alternatives to burning are given in Appendix C of the Smoke Management Program Guidance Document.
- Although not required, consider whether you can use any emission reduction techniques for your burn. Appendix D of the Smoke Management Program Guidance Document gives a detailed list of potential emission reduction techniques.
- Burn only between the hours of one hour after sunrise to one hour before sunset. Do not burn within 300 feet of an occupied dwelling, office, school, campground, etc. Or, you may choose to burn only when the ventilation category for that day is good or better. A worksheet for determining ventilation category for your specific area is available from the Air Quality Bureau. Appendix E of the Smoke Management Program Guidance Document describes how to determine ventilation category. In this case, you will also need to do visual monitoring of the smoke from the burn. Watch the smoke and note the color of the smoke and the direction it goes. A smoke monitoring worksheet is available from the Air Quality Bureau.
- Notify the local fire authority (for example, local fire department or fire dispatch) before you start to burn.
- If the burn will be within one mile of other people, you must notify them by an appropriate method. This may be done by posting flyers or calling people, or by any other method that will give them adequate notification. This notification must be done no later than two days prior to beginning burning. See the Smoke Management Program Guidance Document Appendix G for additional guidance on public notification.
- If the burn will be within one mile of other people, you must visually monitor the smoke from the burn. Watch the smoke and note the color of the smoke and the direction it goes. A smoke monitoring worksheet is available from the Air Quality Bureau.
- If you haven't completed your burn within the initial seven days noted on the registration form, complete a burn continuation notification form and submit it to the Air Quality Bureau within one business day prior to the start of that continued seven day period.
- Within two weeks following the end of the burn, submit a tracking form to the Air Quality Bureau with the information on the amount you actually burned and whether you used any emission reduction techniques for your burn.

New Mexico Environment Department
Air Quality Bureau
SMP II Requirements Factsheet



- Fill out the SMP II registration form for crops or for grasslands/shrubs/forests depending on the type of vegetation you are planning to burn. Submit the form to the Air Quality Bureau's Santa Fe office no later than two weeks prior to the day you plan to start the burn project. You can submit the form on-line at <http://smoke.state.nm.us>, fax the form to (505) 476-4375, e-mail the form to nmenv.smoke@state.nm.us, or mail the form to the Air Quality Bureau at 1301 Siler Rd., Bldg. B, Santa Fe, NM 87507. You can call the Air Quality Bureau with any questions regarding the smoke management program at 1-800-224-7009 and ask for the Smoke Management line.
- Consider alternative ways of disposing of the vegetative material other than burning. For example, grass clippings can be composted. Some communities have chipping facilities available for woody vegetative material. Other alternatives to burning are given in Appendix C of the Smoke Management Program Guidance Document. Documentation of this consideration must be included in your SMP II registration form.
- Consider the use of emission reduction techniques for your burn. Appendix D of the Smoke Management Program Guidance Document gives a detailed list of potential emission reduction techniques. You must use at least one emission reduction technique or receive a waiver of this requirement. On the SMP II registration form, check the emission reduction technique(s) you plan to use.
- Notify the Air Quality Bureau by 10:00 a.m. at least one business day prior to beginning your burn. You may notify for up to seven consecutive days of burning. If your burn will last longer than seven days, re-notify on the same form for additional burn days.
- Burn only when the ventilation category for that day is good or better. A worksheet for determining ventilation category for your specific area is available from the Air Quality Bureau. Appendix E of the Smoke Management Program Guidance Document describes how to determine ventilation category. You may be able to receive a waiver for this requirement.
- You will also need to do visual monitoring of the smoke from the burn. Watch the smoke and note the color of the smoke and the direction it goes. A smoke monitoring worksheet is available from the Air Quality Bureau. Keep this worksheet in your files. We may ask you to submit it at a later time.
- Notify the local fire authority (for example, local fire department or fire dispatch) before you start to burn.
- If your burn project is located within 15 miles of other people, notify them by an appropriate method. This may be done by posting flyers or calling people, or by any other method that will give them adequate notification. This notification must be done no later than two days prior to beginning burning. See the Smoke Management Program Guidance Document Appendix G for additional guidance.
- Within two weeks following the end of the burn, submit a tracking form to the Air Quality Bureau with the information on the amount you actually burned and whether you used any emission reduction techniques for your burn.