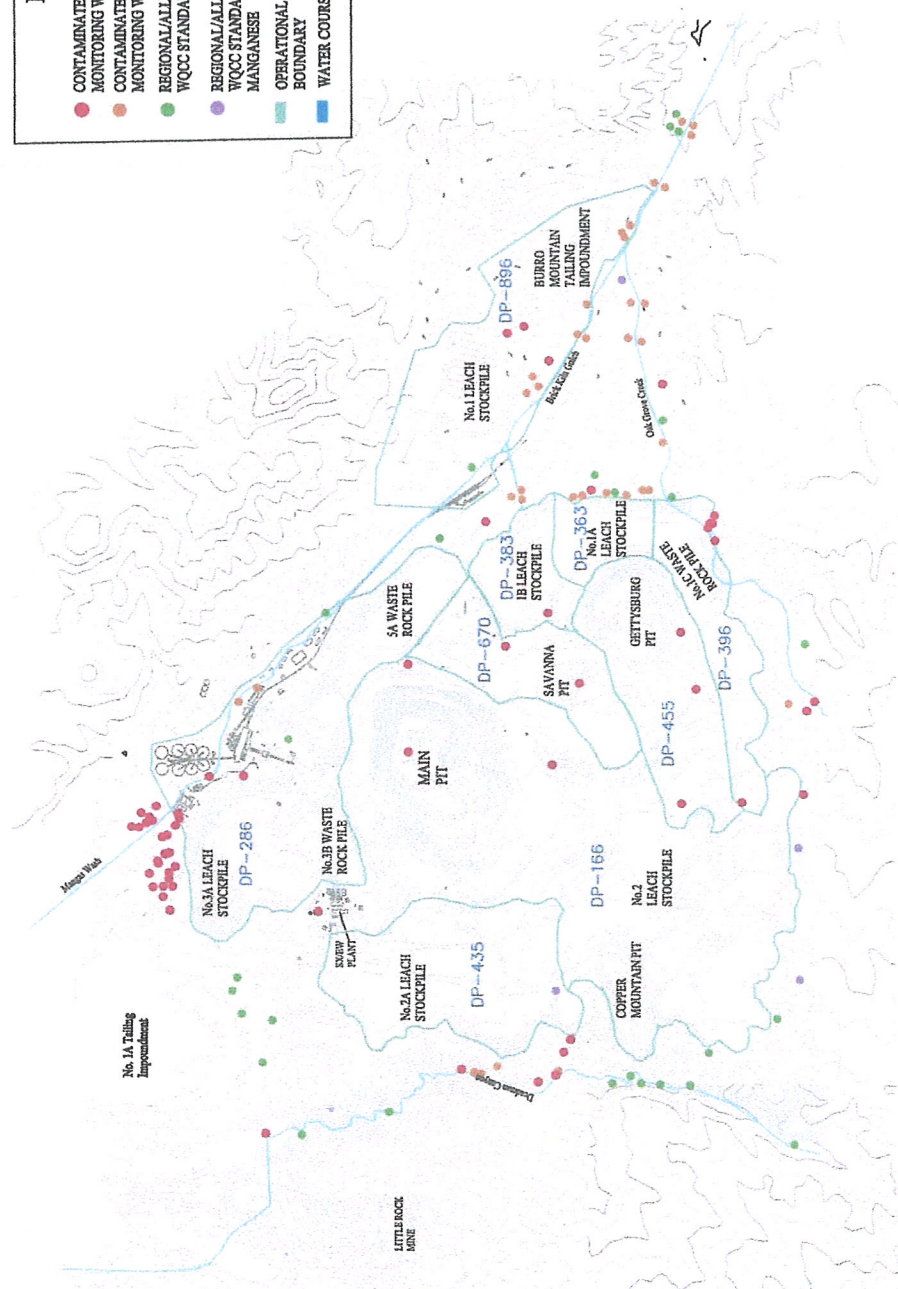


- LEGEND**
- CONTAMINATED REGIONAL AQUIFER
  - MONITORING WELL
  - CONTAMINATED ALLUVIAL AQUIFER
  - MONITORING WELL
  - REGIONAL/ALLUVIAL WELL THAT MEETS ALL WQC STANDARDS
  - REGIONAL/ALLUVIAL WELL THAT MEETS ALL WQC STANDARDS EXCEPT FOR FLUORIDE AND MANGANESE
  - OPERATIONAL DECHARGE PERMIT
  - BOUNDARY
  - WATER COURSE



WCO  
Exhibit #14

Map Modified by NMED from  
Site Map Furnished by Phelps  
Dodge Tyrone Inc.

Scale  
Length of Bar  
is 4000 ft.

NMED Exhibit 19: Ground Water Quality  
at the Tyrone Central Mining Area